

User Manual

HD WIFI Inspection Camera

US UK CA

GENERAL SAFETY INFORMATION

WARNING! Read and understand all instructions before using this product. Failure to follow all instructions listed below may result in electric shock, fire or serious personal injury.

SAVE THESE INSTRUCTIONS!

- ※ Prevent object and liquid entry. Liquid increases the risk of electrical shocks and damages to the product.
- ※ The unit is not shock-resistant. Do not use Depstech WiFi Endoscope as a hammer and avoid high impact resultant from things such as dropping the unit from height.
- ※ The lens and the tube are water resistant when the unit is fully assembled, but the WiFi box is not. Do not immerse the WiFi box in water.
- ※ Do not use the camera if condensation forms inside the lens. Let the water evaporate before using again.
- ※ Turn off the WiFi Endoscope and place it in a dry environment if it is not in use.
- ※ Attention should be given to the environmental aspects of battery disposal.
- ※ It's normal that the camera will turn hot especially when the LED is in the brightest, but it will not affect the usage or life-span of the endoscope.
- ※ The WiFi transmission distance is about 10 meters without any obstacles. Please keep the distance between WiFi box and mobile phone within that distance.

- ※ Please keep the unit away from other strong WiFi signals when using this endoscope, otherwise, it may affect the WiFi connection between the WiFi box and the smart phone.
- ※ Please note the camera probe is only IP67 waterproof which means it can only do underwater inspections for no deeper than 1meter and no more than several minutes. Otherwise, it may damage the camera lens and affect image quality.
- ※ When charging, the green power led light up; Green power led off means fully charged. Moreover, please do not use any other household adapter/wall charger to charge the WiFi Endoscope, otherwise it may damage the power board of WiFi endoscope.

WELCOME

Welcome to buy this product. Before using the product, please read all the instructions carefully.

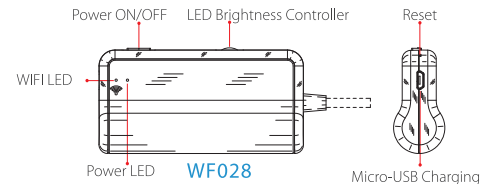
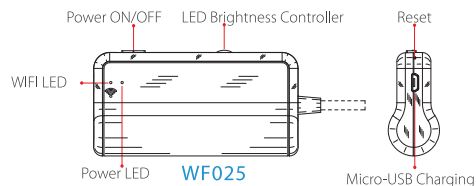
FEATURES

This product is a utility class equipment with the function of real-time video viewing, video recording and picture capturing,etc...which is suitable for usage in narrow area and the area which cannot be observed by sight, such as: vehicle repairs, sewer inspection/maintenance, vent pipe inspection etc.

SPECIFICATIONS

| | | |
|--------|----------------------------|----------------------------------|
| Camera | Model | WF025 |
| | Imaging sensor | CMOS |
| | Camera resolution | 1280x720, 640x480 |
| | Horizontal view angle | 62 degrees |
| | Camera focal distance | 7cm-40cm (fixed focus, not zoom) |
| | Diameter | 5.5mm |
| | Working voltage | DC 5V/2A |
| | Battery Capacity | 2200mAh |
| Camera | Model | WF028 |
| | Imaging sensor | CMOS |
| | Camera resolution | 2592x1944,1920x1080,1600x1200 |
| | Horizontal view angle | 80 degrees |
| | Camera focal distance | 7cm-40cm (fixed focus, not zoom) |
| | Diameter | 8.5mm |
| | Working voltage | DC 5V/2A |
| | Battery Capacity | 2600 mAh |
| Camera | WiFi Transmission Distance | 10meters(without any obstacles) |
| | Waterproofing grade | IP67(for lens/tube only) |

Product Structure Introduction



OPERATION

Instruction: The client-side can support Android / IOS.
Version requirement: Support Android 2.3 and higher, IOS 6.0 and higher(Note: IOS 8.0 lower system can not record videos.).

Factory Default WiFi SSID: Jetion_***** please kindly note that "*" is a symbol here, and in your use, these asterisks will be replaced by a series of letters and numbers randomly.

Factory Default Password: 12345678

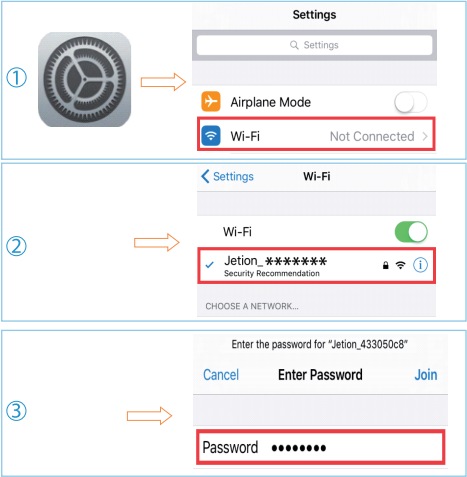
Detailed Operation Steps:

① Search the free "DEPSTECH" APP in Apple Store or Depstech-WiFi in Google play store, and download and install it.



② Turn on the endoscope WiFi box power switch firstly, the red power LED and the blue WiFi Signal LED will light up.

③ Turn on your smart phone, then go to the phone "settings"; choose WiFi/Wlan to select and connect the default WiFi from the endoscope, " Jetion_*****" by entering default password "12345678", and finally click join. When connected well, the blue wifi signal LED will flick. If not, it means it failed in connection, please reconnect or check the power of the WiFi box before reconnecting. Please charge wifi box through DC 5V 2A portable battery or computer USB, or the box battery will be burned.



④ After joining the endoscope WiFi, please click the free Depstech"for IOS, "Depstech-WiFi" for android on your smart devices or then you are ready to operate the camera.



How to use APP:

1. Modify WiFi SSID and WiFi password.

Click the " Settings" icon in "DEPSTECH" app, and input the new WiFi SSID and password you want to set. Then click " Set WiFi SSID" & " Set WiFi Password" to finish the modification.



Note 1: if not necessary, we do not advise our customers to change the original WiFi SSID and WiFi password for stabler using experience. If you forgot the modified password, please use a clip to press the reset hole and restart the endoscope and re-join its WiFi. Only the password can be reset, please find the modified WiFi SSID to join with default password after reset.

Note 2: The new WiFi password must be within 8 characters either numbers or letters without any special marks like asterisk "*" or dash "-".

Note 3: The device needs to be restarted after the modification.

2. Capture photos or record videos

For capturing photos, click icon on the main interface of the app. For recording videos, click icon on the main interface of the app. For adjusting scope direction/range, click icon on the main interface of the app.

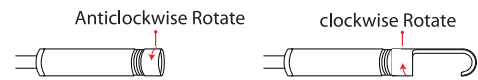
3. Browse captured photos or recorded videos

For reviewing captured photos or recorded videos, click icon on the main interface of the app. Please kindly note that the photos and the videos will be saved in your Photo app when you enable the app accessible to the "Photo" in your phone settings.

4. Modify Camera Resolution

Click the " Settings" icon on the main interface, and then choose the resolution via clicking icon; confirm the adjustment with touching icon.

Accessories



How to Charge the WiFi Endoscope?

1. Via Android smart phone, using micro USB to micro USB (not included) charging cable.

2. Via PC computer or Power Bank (DC 5V, 2A), using the attached Micro USB to USB charging cable.



Troubleshooting

What can I do if no image showing on the app or failed connections or image freezing?

1. Please check whether you have input the correct WiFi Password. (Note: Please remember the password If you have modified, otherwise, it will result inconnection fails.)
2. Please check whether the WiFi box is full of power. Lower power may cause connection fails, and please recharge it timely.
3. Try to restart the WiFi box and reconnect it with your phone.
4. Exit the APP interface, and re-enter.
5. Try to uninstall the WiFi View APP, then re-install and update it.
6. Please keep the distance between WiFi box and mobile phone within 10 meters without any obstacles.
7. Keep away from other strong WiFi signals around or turn off it when using this WiFi endoscope.
8. Please turn off data cellular of your phone.
9. Have you seen any window popping up"internet connected but not available,if so please click the window and choose stay connection

NORTH AMERICA

E-mail:
support@depstech.com(US)
support.ca@depstech.com(CA)

EUROPE

E-mail:
support.uk@depstech.com(UK)

DEPSTECH

www.depstech.com
WF025-D WF028-D S P030000102