

# Hello

## User Manual

for Depstech® HD Inspection Camera

# Thanks for choosing Depstech® HD Inspection Camera!

The Depstech®HD Inspection Camera was featured as a wireless inspection camera, which was invented to help car maintenances or pipeline repairing. We hope that you can use this efficiency tool to save some teatime yourself, as well as helping you discover some joyful tiny-world around!

In purpose of upgrading the newest user manual for your reference, we would recommend Downloading The **Multi - Language E - User Manual** of your endoscope by log in our official website: [www.depstech.com](http://www.depstech.com)

You can **find the Navigation on the Top - Click into Endoscope - Click into WiFi Endoscope - Roll and choose Model Number: WF020X/025/028 - Roll and Click Download Button** for the **E - User Manual**

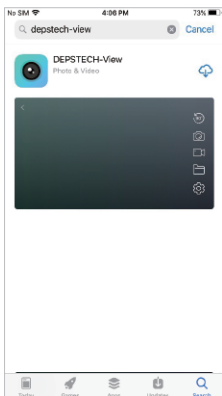
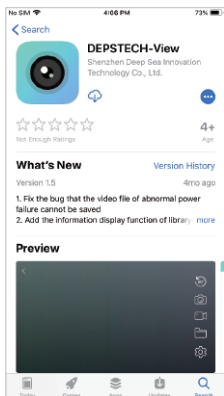
Any suggestions or customer service needs are warmly welcomed by us. You can feel free contacting us via Email: [support@depstech.com](mailto:support@depstech.com)

Facebook Official Page: **@DEPSTECH. FANS**

Please remember to provide your **Product Model No. And Order ID** on the e-mail!

Thanks for your support again!

## Step 1- APP Downloading



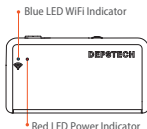
**For iOS user (iOS 9+),** search and download “DEPSTECH-View” app from APP Store.

**For Android user (Android 5.0+),** search and download “DEPSTECH-View” from Google Play Store.

**For Windows user,** we would recommend you download the advertisement-free “DEPSTECH-View” application via [www.depstech.com](http://www.depstech.com)

Note: For the first usage, the application may require your permission to get access to the camera, album or WLAN/WiFi setting. But pls don't worry, we promise there is no privacy risk for our app.

## Step 2- Device Activation



Push the power button to **“ON”** to open your WF020X/ 025/ 028 inspection camera.

Note: Once the power system standby, the red LED indicator will stay on. When the blue LED indicator flashed, means the WiFi module is ready to paired.

## Step 3- WiFi Connection

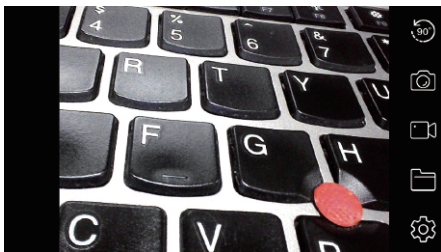
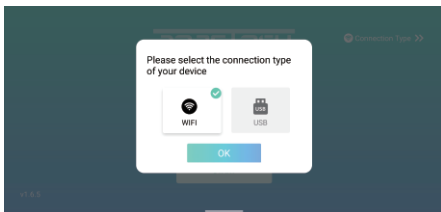


A. Turn to the WiFi setting on your smart devices (Phone, Tablet or PC with WiFi module), search for the factory setting **WiFi SSID: DEPSTECH\_\*\*\*\*\***

B. Then choose and fill the factory setting **WiFi password: 12345678**

**Note:** "\*\*\*\*\*" will be a series of random numbers& letters, and it may take several seconds to wait for the WiFi signal and the wifi connection. Please be patient for the process.

## Step 4- Start Your First Trial!

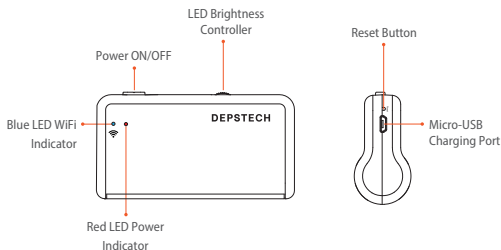


Open the “**DEPSTECH-View**” application that you’ve downloaded to your smart devices previously, you can get the real-time image of the inspection camera via “**DEPSTECH-View**” immediately! Start your first trial of your brand new inspection camera!

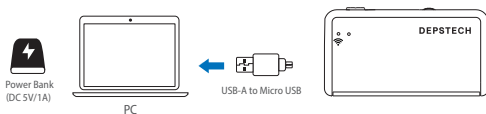
**Note:** The blue led indicator on the panel will stay on after entering the application.

For Android user, please select the connection type as "WiFi".

## Product Structure Introduction



## Charging Guide



You can charge the endoscope with power adapter, power strip, DC 5V/1A power bank, PC or Laptop. Please connect the endoscope with the power source via the USB-A to Micro USB cable.

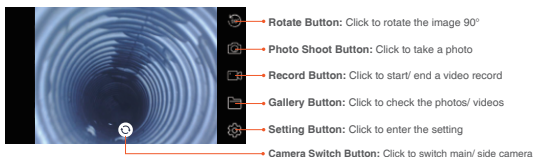
**Note:** During the charging process, the green LED indicator will steady on. When the device was fully charged, the green LED indicator will turn off. Please note the charging source should be higher DC 5V/1A, which means you can look for a computer USB port/ power bank/ qualified power adapter for charging purpose.

## Accessories Installation Guide



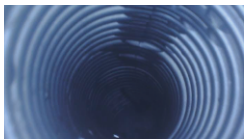
The three included accessories ( Side-mirror, hook and magnet) are all attached to the camera in the same way as illustrated above.

## APP Introduction



### Buttons Hidden Function:

Click the screen to hide/ wake the buttons.




### Zoom in/ Zoom out Function:

Two fingers expand outwards to zoom in the real- time image.

Two fingers get close to zoom out the real- time image.

## APP Introduction



Related Settings


Resolution


1920x1080

WiFi Setting

Reset

Channel switching

 Switching

 FAQ&Help

**Resolution:** Click to choose different resolution.

**WiFi Setting:** Click to modify the WiFi SSID and Password. After setup please remember to click reset button.

**Channel Switch:** Click if there are too many 2.4g& 5g wifi signal disturb nearby.



WiFi Settings

WiFi Settings

DEPSTECH\_\*\*\*\*\*

WiFiPassword Setting

12345678

Reset



## Specification

Model	WF020X	WF025	WF028	WF028 Dual Cam
Sensor	2MP CMOS	2MP CMOS	5MP CMOS	2*2MP CMOS
Maximum Resolution	1920*1080px	1920*1080px	2592*1944px	1920*1080px
Viewing Angle	67°±3°			2*72°(144°)
Depth of View	1.96-11.8 in			Main cam: 1.2-3.9 in Side cam: 4/5~2.4 in
Diameter	8.5mm	5.5mm	8.5mm	7.9mm
Working Voltage and Electric Current	DC 5V/2A			
WiFi Frequency	2.4G			
WiFi Transmission Distance	33.3ft (Without any obstacles)			
Waterproof Grade	IP67(For camera part only)			
LED Indicator Status	Red LED indicator flash: Low battery Red LED indicator stay on: Power system standby Blue LED indicator flash: WiFi standby Blue LED indicator stay on: Data transfer status Green LED indicator stay on: Charging status Green LED indicator off: Charging finished			

## FAQ& Help

**Q1:** How to connect WiFi endoscope to "DEPSTECH-View"?

- A1:**
1. Make sure the device is fully charged, long press the power button or press the switch to turn on the device. The WiFi module will turn on about 15 seconds after turning on the device. You can observe whether the WiFi signal light (blue light) of the device is always on. If it is on, it indicates that the WiFi module is ready;
  2. Enter the phone's "Settings" - "WiFi Connection" to find the WiFi name printed on the device; select and connect, the default password is "12345678". If the phone prompts "Internet may be unavailable", please ignore the prompt and select "Keep Connected";
  3. Open this App and get real-time images of the endoscope. While the App is acquiring the device image, the WiFi signal light will flash. If the image cannot be obtained during the flashing process, please contact the seller of the device.

**Q2:** The mobile phone cannot get the real-time image of the WiFi endoscope or the screen went black?

**A2:** Please follow the steps below to solve the problems.

1. Please try to restart the device after fully charged.
2. There is a reset hole near the charging port of the device. Please use the attached reset pin to insert the reset hole. Please make sure that you've reached the reset button with the reset pin, and the device will turn on again.
3. Please turn off the "WiFi" function of other mobile phones that have been connected to this WiFi endoscope at home.

## FAQ& Help

4. Turn on the phone in airplane mode, search for the WiFi signal identified on the device body, select and connect it, the default password is "12345678";
5. It should be noted that during the installation of this App, you need to authorize the "photo/media content" and "document storage" permissions of this App, otherwise some functions such as taking pictures/viewing albums may be hindered;
6. For iOS users (especially iOS 14), please enter the "Settings" interface of the phone, find and click "DEPSTECH-View", then turn on the "Cellular Data" and "Native network" option, otherwise it may not be able to establish communication with the device.

**Q3:** Can search for the Wi-Fi signal, but couldn't get the connection?

- A3:**
1. The Wi-Fi connection may be failing, you've to forget the network and reconnect it. Also, you can change to an some place without Wi-Fi distribute and retry the connection.
  2. For Android user, at the first time of connecting to the Wi-Fi signal, the phone may tip "Internet may not be available", please click "Keep Wi-Fi connection" option.
  3. For iOS user, please make sure that you've turn on the "Cellular data" and "Native network" option in the settings - "DEPSTECH-View".
  4. For user who used to modified the Wi-Fi-SSID/ password before, please use a reset pin and plug it into the reset port of the endoscope. You can refer to lable on the bottom to the default Wi-Fi SSID/ Password and reconnect it.

If you still couldn't figure out how to get the connection, please feel free contacting the supplier for help.

## SAFETY & MAINTENANCE INFO

For your safety and better using experience, please read the instructions carefully before using.

- ※ Please remember to turn off the endoscope and place it in a dry environment after per use. You can use soft cotton cloth with little alcohol to keep the camera lens clear, which also does great help to capture the best image. Besides, for every three month you should charge and use your electric devices regularly, which will do great help to extend the battery life.
- ※ The storage temperature should between 32-158°F. And the working temperature should between 32-113°F. Besides, the Childs can only operate this device with the guidance of adults, please don't let them operate the device alone.
- ※ Please keep the device away from fire source/ liquid/ acidic. These may increase the risk of electrical shocks and damages of the device.
- ※ The unit is not shock-resistant. Please avoid high impact results from things such as dropping the unit from height.
- ※ The lens and the tube are water resistant when the unit is fully assembled, but the WiFi box isn't. Which means IP67 waterproof only available for the camera probe part, and the camera part support underwater inspections within 3.33ft/ 30 mins.

Note: Do not immerse the WiFi box in water

- ※ According to the guidance of WEEE, attention should be given to the environmental aspects of battery disposal.
- ※ It's normal that the camera will turn hot, especially when the camera LED turn to the brightest level, but it won't affect the regular usage or the lifespan of the endoscope.
- ※ The WiFi transmission distance is about 33ft without any obstacles. Please keep the distance between WiFi box and the phone/ tablet within 33ft.
- ※ Please Keep the unit away from strong WiFi disturb area while using. Otherwise, it may affect the WiFi connection between the WiFi box and the smartphone.



※ FCC statement: This device complies with Part 15 of the FCC rules. Operation is subject to the following two conditions:

- 1) This device may not cause harmful interface;
- 2) This device must accept any interference received, including interference that may cause undesired operation.

This equipment complies with FCC radiation exposure limits set forth for an uncontrolled environment. This equipment should be installed and operated with a minimum distance of 20cm between the radiator & your body. This transmitter must not be co-located or operating in conjunction with any other antenna or transmitter.



※ EU Conformity Statement

This product and - if applicable - the supplied accessories too are marked with "CE" and comply therefore with the applicable harmonized European standards listed under the EMC Directive 2004/108/EC, the RoHS Directive 2011/65/EU and Amendment (EU) 2015/863.



※ 2012/19/EU (WEEE directive): Products marked with this symbol cannot be disposed of as unsorted municipal waste in the European Union. For proper recycling, return this product to your local supplier upon the purchase of equivalent new equipment, or dispose of it at designated collection points. For more information see: [www.recycle-this.info](http://www.recycle-this.info)

2013/56/EU (battery directive): This product contains a battery that cannot be disposed of as unsorted municipal waste in the European Union. See the product documentation for specific battery information. The battery is marked with this symbol, which may include lettering to indicate cadmium (Cd), lead (Pb), or mercury (Hg). For proper recycling, return the battery to your supplier or to a designated collection point. For more information see: [www.recyclethis.info](http://www.recyclethis.info)

---

**EC REP 1:**

Like Sun GmbH  
Planckstr.59, 45147 Essen, Germany  
[ec-connection@web.de](mailto:ec-connection@web.de)

**EC REP 2:**

DST Co., Ltd.  
Fifth Floor 3 Gower Street, London, WC1E 6HA, UK  
[www.dsteu.com](http://www.dsteu.com)

# DEPSTECH

**Shenzhen Deepsea Innovation Technology Co., Ltd.**

Room 1901-1902, Jinqizhigu Building, No.1 Tangling Road, Nanshan District,  
518055, Shenzhen, CN