

# Hello

## **User Manual**

Applicable to Depstech® WF010 HD  
Industrial Endoscope

# Thank you for choosing Depstech® WF010 HD Industrial Endoscope!

DEPSTECH WF010, a wireless industrial endoscope, designed to improve the efficiency of car or pipeline repair. We hope it can help you save time and explore more of the surrounding microworld.

It would be recommended that you download the latest version of the electronic manual on our official website

[www.depstech.com](http://www.depstech.com)

You may download it through these steps: **open our official website and find the navigation bar; Then click Support and then find "Downloads> Wi-Fi Endoscope> WF010"; click Endoscope and then Wi-Fi Endoscope; scroll the page down to find WF010 industrial endoscope; scroll the WF010 endoscope page down to find the Download button and click it. Then you can then download the WF010 User Manual.**

For any helps or suggestions, please feel free to contact us. Here are the way to conatct us.

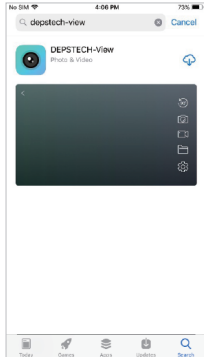
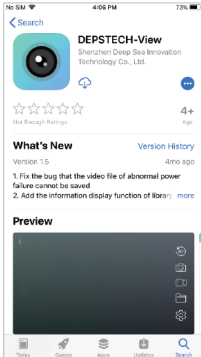
Email: [support@depstech.com](mailto:support@depstech.com)

Official Facebook: [@DEPSTECH.FANS](https://www.facebook.com/DEPSTECH.FANS)

Please attach your **Order Number** and **Product Model** in the email, which will greatly improve the efficiency of email communication!

Thank you for your support!

## Step 1: Download the APP



**iOS (iOS 9 or above)** users download DEPSTECH-View from APP Store

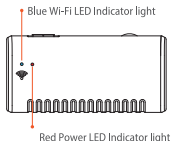
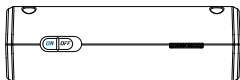
**Android (Android 5.0 or above)** users download DEPSTECH-View from Google Play

**Windows 10** users download DEPSTECH-View from Microsoft Store

### Note:

1. For Windows 7 user, please download the corresponding Depstech-view.exe on our official website ([www.depstech.com](http://www.depstech.com))
2. We respect your requirement for privacy protection, and we will do our best to protect your privacy. For the first use, DEPSTECH-View may need your permission to access your albums or photos/ WLAN/ cellular data network/ local network, etc. It's essential to enable those permissions to get the real-time images. Please enable the above permissions to ensure the normal functionality of the APP. If some functions are disabled, please go to Settings -> DEPSTECH-View to enable corresponding features.

## Step 2 - Power-on



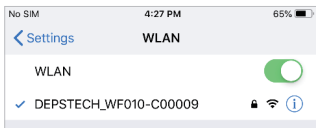
Take out the endoscope and find the transmitter. Move the toggle switch to "ON" to activate the WF010 endoscope.

### Note:

Before the first use, please fully charge the device. If the red LED stays on, it indicates the power system works properly.

When the blue LED flashes, it means that the Wi-Fi is ready to pair. It usually takes 15-20 seconds from turning on the device till you can search for the Wi-Fi signal.

## Step 3 - Wi-Fi connection



A. Turn on Wi-Fi of your mobile phone/ pad or Windows laptop and search the endoscope Wi-Fi. The default name is

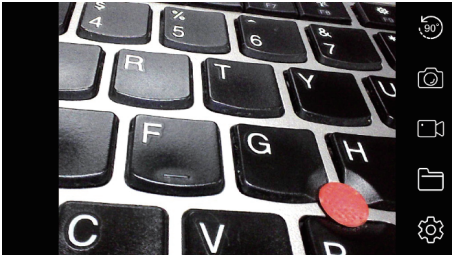
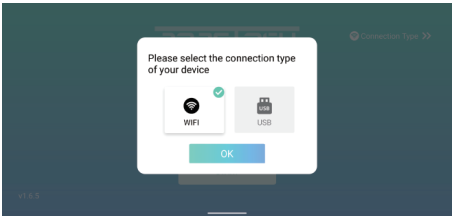
**DEPSTECH\_WF010- \*\*\*\*\***

B. Select it and input the default **Wi-Fi password: 12345678**

### Note:

1. \*\*\*\*\* is a set of random numbers and letters. It may take a few seconds to search the Wi-Fi signal and successfully connect it. Please be patient.
2. If your phone prompts "The Internet is unavailable. Do you want to keep connected or access to other networks such as the cellular data network?", please click "Keep Connected"

## Step 4 - Start your first use!



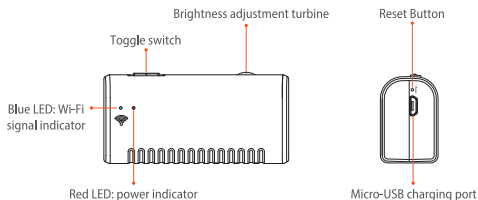
Open the **DEPSTECH-View** app downloaded to your smart device in Step 1. You can now get real-time images through **DEPSTECH-View**! Try it now!

### Note:

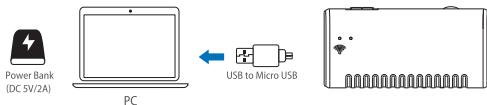
If the endoscope and your smart device connected successfully, you can receive the real-time images of the endoscope via the **DEPSTECH-View** app, and the blue LED of the endoscope Wi-Fi transmitter will stay on.

For Android user, please select the connection type as "Wi-Fi".

## Product structure



## Charging Guide



Connect the endoscope to a adapter/ PC/ laptop or a power bank through the USB-A to Micro USB cable in the package for charging (DC 5V/2A).

### Note:

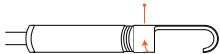
During charging, the green LED will stay on. When the endoscope is fully charged, the green LED will turn off. Please note that the power source shall be DC 5V/2A. Please use the USB port computer/ power bank or adapter that meets the specifications to charge the device.

# Guide for Accessories Installation

Turn counterclockwise-remove accessories



Turn clockwise-tighten accessories



The three included accessories (90° side mirror, hook and magnet) should all be connected to the camera tips in the same way as shown in the picture above.

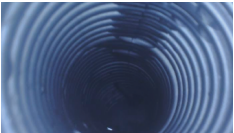
## APP



- Rotation Button:** Click it to rotate the image 90° degrees
- Photo Shoot Button:** Click it to take photos
- Video Record Button:** Click to start/ end a video record
- Gallery Button:** Click it to view photos/videos
- Setting Button:** Click it to go to Settings

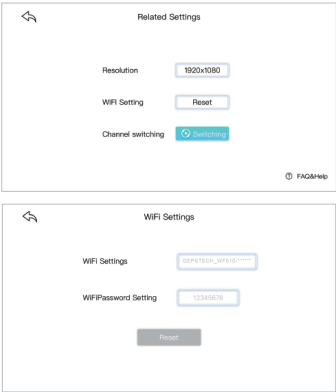


**Button Hiding Function:**  
Click the screen to wake up/ hide buttons.



**Digital Zoom Function:**  
The APP supports digital zoom. Put your two fingers on the screen, to spread and narrow on the screen to zoom in and out.

# APP



**Resolution:** Click it to switch the resolution.

**Wi-Fi settings:** If there is no device connected, you can click it to jump to the Wi-Fi settings interface.

You can reset the Wifi SSID/ password once you've got the smart device connected with the endoscope

**Note:**

If not necessary, please do not turn to reset process. It's advised that the Wi-Fi name be different from your home Wi-Fi, otherwise it may cause signal interference and equipment abnormality

**Channel switching:** If there is 2.4G signal interference nearby, click it to switch channels.

**Reset Wi-Fi name:** Click it to reset Wi-Fi name.

**ResetWi-Fi password:** Click it to reset Wi-Fi password.

**One-key reset:** After inputting the new Wi-Fi name and password, click “One-key reset” (If not necessary, please do not use it for reset).



Product parameter	
Optical sensor	CMOS
Resolution	Max. 1920*1080px
Viewing angle	67°±3°
Depth of field	1.96-11.8 inches
Diameter of lens tube	8.5mm
Working voltage and current	DC 5V/2A
Wi-Fi frequency bands	2.4G
WiFi Transmission Distance	10m (without any obstacles)
Waterproof Grade	IP67 (for lens/tube only)
LED status	<p>Red light flashes: the endoscope is in low-power state</p> <p>Red light stays on: the power system is working</p> <p>Blue light flashes: Wi-Fi connection in process</p> <p>Blue light stays on: the endoscope and the smart device are communicating</p> <p>Green light is on: the device is being charged</p> <p>Green light is off: uncharged or charging completed</p>

## FAQs and Answers

Q1: While the endoscope is in use, can other apps be connected to the Internet normally?

A1: It depends on your device. IOS users can go to Settings> select the DEPSTECH-View app> enable cellular data network. For Android users, it depends on the OS permissions of different brands of mobile phones. You can go to Settings> Developer options> Networking> turn on “Mobile data always active” and “Tethering hardware acceleration” to try.

Q2: Can I connect the endoscope to a smart home system or home Wi-Fi network?

A2: The endoscope cannot be connected to smart platforms or the home Wi-Fi network. If the Wi-Fi SSID/ password is set to be the same as other portable hotspots by mistake, it will cause abnormal communication with the endoscope. If you accidentally set the Wi-Fi SSID/ password of the endoscope to be the same as the home Wi-Fi network, you can use the needle in the accessories or a ballpoint pen to press the reset button at the bottom of the device and hold it for seven seconds. Once the reset is successful, Wi-Fi will restart, the blue light on the transmitter panel will flash, and the Wi-Fi SSID/ password will be reset to factory default settings.

**Note:** In case you forget the initial Wi-Fi SSID/ password, we have printed them on the label on the back of the device for your reference.

## FAQ& Help

Q3: What should I do if there is no image on the app, or the connection fails or the image freezes?

A3: It may be caused by multiple reasons. Please follow the instructions below.

- a. Please turn on the “Airplane Mode” and try to open the DEPSTECH-View application again.
- b. For iOS 14 users, after installing the DEPSTECH-View app for the first time, you may need to go to Settings> DEPSTECH-View> turn on Local Network and Cellular Network. Then stop the app from running in the background. Finally, restart the app.
- c. Please check if you have input the correct Wi-Fi password. (Note: If you have changed your password, please keep it in mind. If you've forgot it, you can refer to A2 to reset the Wi-Fi name/ password.)
- d. Please check if the Wi-Fi box is fully charged. Insufficient battery may cause connection failure. Please charge it in time.
- e. Restart the Wi-Fi box and reconnect it to your phone. Exit the APP and then restart it.
- f. Uninstall the DEPSTECH-View APP and then install the latest version.
- g. Please make sure the Wi-Fi box is within 10 meters away from your phone, and there are no obstacles between them.
- h. When using this Wi-Fi endoscope, please keep it away from other Wi-Fi hotspots with strong signal, or turn off other hotspots.

**Note:** If the malfunction cannot be solved after the above operations, please contact us via email [support@depstech.com](mailto:support@depstech.com)

## SAFETY & MAINTENANCE INFO

For your safety and better using experience, please read the instructions carefully before using.

- ※ Please remember to turn off the endoscope and place it in a dry environment after per use. You can use soft cotton cloth with little alcohol to keep the camera lens clear, which also does great help to capture the best image. Besides, for every three month you should charge and use your electric devices regularly, which will do great help to extend the battery life.
- ※ The storage temperature should between 32-158°F. And the working temperature should between 32-113°F. Besides, the Childs can only operate this device with the guidance of adults, please don't let them operate the device alone.
- ※ Please keep the device away from fire source/ liquid/ acidic. These may increase the risk of electrical shocks and damages of the device.
- ※ The unit is not shock-resistant. Please avoid high impact results from things such as dropping the unit from height.
- ※ The lens and the tube are water resistant when the unit is fully assembled, but the Wi-Fi box isn't. Which means IP67 waterproof only available for the camera probe part, and the camera part support underwater inspections within 3.33ft/ 30 mins.

Note: Do not immerse the Wi-Fi box in water

- ※ According to the guidance of WEEE, attention should be given to the environmental aspects of battery disposal.
- ※ It's normal that the camera will turn hot, especially when the camera LED turn to the brightest level, but it won't affect the regular usage or the lifespan of the endoscope.
- ※ The Wi-Fi transmission distance is about 33ft without any obstacles. Please keep the distance between Wi-Fi box and the phone/ tablet within 33ft.
- ※ Please Keep the unit away from strong Wi-Fi disturb area while using. Otherwise, it may affect the Wi-Fi connection between the Wi-Fi box and the smartphone.



※ EU Conformity Statement

This product and - if applicable - the supplied accessories too are marked with "CE" and comply therefore with the applicable harmonized European standards listed under the EMC Directive 2004/108/EC, the RoHS Directive 2011/65/EU and Amendment (EU) 2015/863.



※ 2012/19/EU (WEEE directive): Products marked with this symbol cannot be disposed of as unsorted municipal waste in the European Union. For proper recycling, return this product to your local supplier upon the purchase of equivalent new equipment, or dispose of it at designated collection points. For more information see: [www.recycle-this.info](http://www.recycle-this.info)

2013/56/EU (battery directive): This product contains a battery that cannot be disposed of as unsorted municipal waste in the European Union. See the product documentation for specific battery information. The battery is marked with this symbol, which may include lettering to indicate cadmium (Cd), lead (Pb), or mercury (Hg). For proper recycling, return the battery to your supplier or to a designated collection point. For more information see: [www.recyclethis.info](http://www.recyclethis.info)



※ FCC statement: This device complies with Part 15 of the FCC rules. Operation is subject to the following two conditions:

- 1) This device may not cause harmful interface;
- 2) This device must accept any interference received, including interference that may cause undesired operation.

This equipment complies with FCC radiation exposure limits set forth for an uncontrolled environment. This equipment should be installed and operated with a minimum distance of 20cm between the radiator & your body. This transmitter must not be co-located or operating in conjunction with any other antenna or transmitter.

---

**EC REP 1:**

Like Sun GmbH  
Planckstr.59, 45147 Essen, Germany  
[ec-connection@web.de](mailto:ec-connection@web.de)

**EC REP 2:**

DST Co., Ltd.  
Fifth Floor 3 Gower Street, London, WC1E 6HA, UK  
[www.dsteu.com](http://www.dsteu.com)

# DEPSTECH

**Shenzhen Deepsea Innovation Technology Co., Ltd.**

Room 1901-1902, Jinqizhigu Building, No.1 Tangling Road, Nanshan District,  
518055, Shenzhen, CN